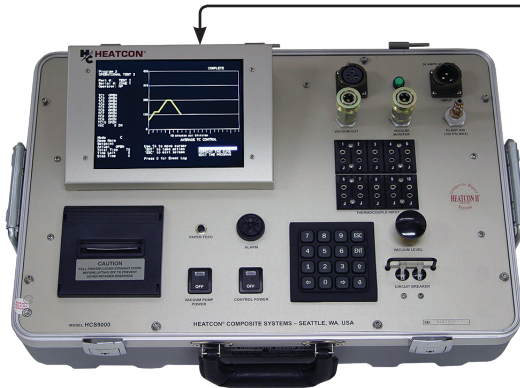


# HOT BONDERS

# EV SERIES REPAIR SYSTEMS



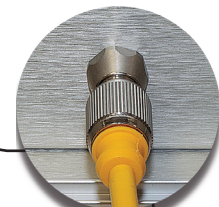
Model: HCS9000B-EV (Single Zone)

**3 YEAR  
WARRANTY**

\*SUBJECT TO TERMS AND CONDITIONS

*The Most Dependable  
Hot Bonders in the  
Composite Repair Industry!*

This line of HEATCON® Composite Repair Systems has a built-in vacuum system to allow easier mobility to the repair site and eliminates the need for a alternative air source. The primary system application is composite and metal bond repairs, by heating and curing preregs, resins or adhesives. Manufacturing applications include secondary bonding processes normally accomplished with autoclaves or ovens. Hot bonders are also useful in R&D projects for materials and processes.



**Network Capable\***  
\*Requires an HCS9300NW Series Controller



Model: HCS9200B-EV (Dual Zone)

**BUILT  
IN  
VACUUM  
SYSTEM**



Scan for Latest Catalog and  
Company Information

# Specifications

## HCS9000B-EV (Single Zone)

<b>Weight</b> - Only 29lbs (13.2kg)
<b>Dimensions</b> - 21.75in x 14.25in x 6.5in (55.25cm x 36.2cm x 16.5cm)

## HCS9200B-EV (Dual Zone)

<b>Weight</b> - Only 38lbs (17.4kg) (Vacuum Pump located in Lid Assembly)
<b>Dimensions</b> - 21.75in x 14.25in x 6.5in (55.25cm x 36.2cm x 16.5cm)



## FEATURES:

High-Resolution, Software Dimmable, and Sunlight readable LCD Screen (5.25in x 6.75in) (13.33cm x 17.14cm)
Improved Text Entry System with Alphanumeric Keypad
USB Interface for Data Export to USB Storage Device
Rapid Start-up (in as little as 10 seconds)
Over 500 hours of Cure Information (12 Cure Records) Stored for Data Export and Printing
Up to Eight (8) Ramps and Dwells per Program
Automatic Graph Scaling for High Temperature Cures above 500 Degrees
Dynamic Alarm / Control Integration
Select by Hottest, Coldest, Average of All or No. 1 / No. 2 Thermocouple (10 Thermocouple Inputs)
Selectable Metric or English Units
90-264VAC (47-63Hz)
30A Power Output per Zone (Higher amperages available)
Power Failure Auto Recovery
Up to 30 Customizable User Named Cure Profiles
Control / Monitor Toggle for Individual Thermocouples
Enhanced Menu Interface for Easier Navigation
Built in Electric Vacuum Pump - Max. flow is 0.75 cubic ft/min (354 cm <sup>3</sup> /sec) and Max. level is 28+ in Hg (0.967 kg/cm <sup>2</sup> )

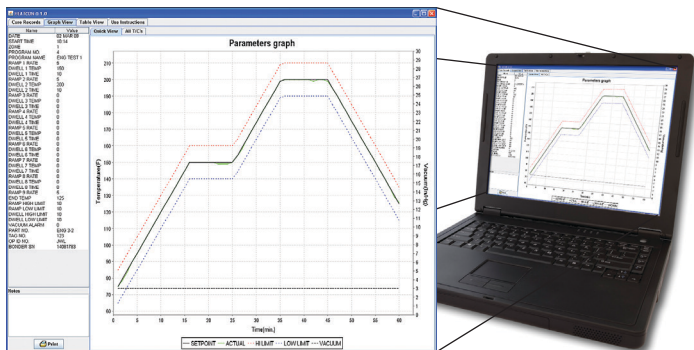
### Accessories Included:

- Heat Blankets
- Power Cords
- Thermocouples
- Vacuum Hose
- Air Filter
- Extra Printer Ribbon and Printer Paper
- Data Capture Analysis Software
- USB Drive

Specific accessories are described by quotation

### Additional Options:

- Network capable when connected to an HCS9300NW series controller
- Supports cures up to 2000 degrees F (Type-K bonders only)
- Foreign language menu systems
- Software security lock with password access
- Accessory kits and tool packages
- Customized silicone rubber heat blankets
- Software modifications for special applications
- Multiple Ramp / Soak Capabilities
- Special Hot Bonder/cure process training



The Data Capture and Analysis Software (HCS-DCAS) is a visual graphical program used for cure evaluation and to create / store a history of cure records for maintenance repair organizations.